



ENCLOSE[™]
MANUFACTURING INC.

GIVING YOU THE CUTTING EDGE TO PERFECTION.

TRAFFIC CABINET CATALOG

1100 HOT ROD ROAD | P.O. BOX 1151 | MITCHELL, SD 57301 | (605).990.2555

 PROUDLY MADE IN USA

INTRODUCTION

Company Founding

Enclose Manufacturing Inc. was founded in 1998 by Bill Wegleitner. Owner and proprietor and longtime resident of the great state of South Dakota. Bill has a mechanical drafting/engineering background and has spent his entire working time in the steel manufacturing area. Bill has built a successful small OEM business providing Industrial Electrical Cabinets serving the Midwest and nationally for over 20 years demonstrating pride in the family business, and genuine caring for the personal well-being of his employees.

Our goal is to produce the most reliable and efficient products available for today's ever changing demands in our industry. Enclose Manufacturing meets and exceeds the needs of the transportation and communication industries, and other environmental specialty custom applications.



ENCLOSE™

MANUFACTURING INC.

1100 HOT ROD ROAD | P.O. BOX 1151 | MITCHELL, SD 57301

 **PROUDLY MADE IN USA**

PHONE 605.990.2555

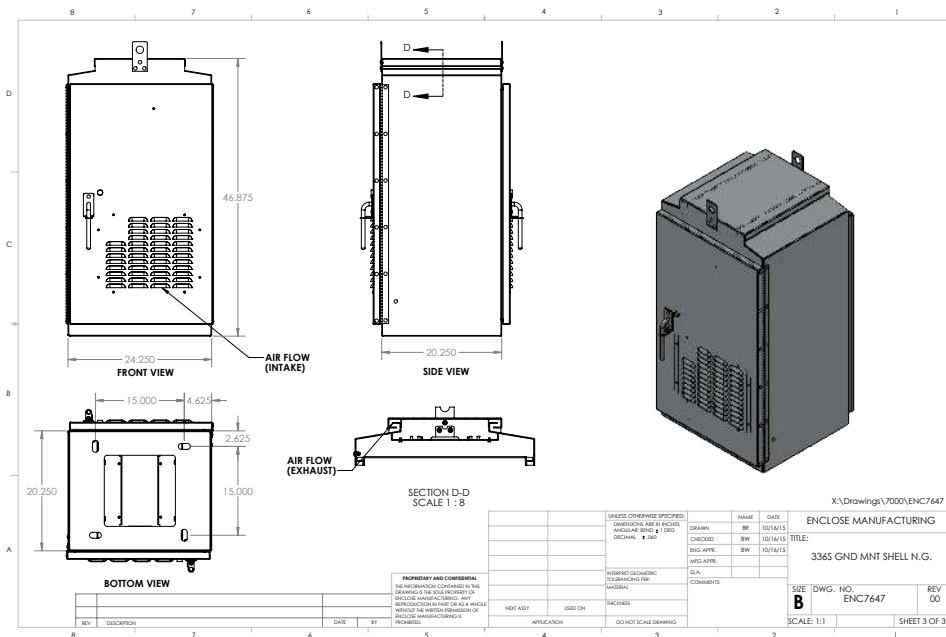
FAX 605.990.2556

SALES/QUOTES: sales@enclosemfg.com

HR./ BILLING INFO: t.callahan@enclosemfg.com

ENGINEERING: b.reinert@enclosemfg.com

b.wegleitner@enclosemfg.com



OPTIONS AVAILABLE

Door Options

- Part No. ENC7586
Corbin Lock #2 Door
- Part No. ENC7654
Best Lock Door

Paint Options

- ANSI-61 Gray
- Anti-Graffiti Gray
- Polyester White
- Flat Black
- Contact us for additional options

336S [STRETCH]

MODEL: 336S Stretch Pad Mount
PART NUMBER: ENC1003
Traffic Enclosure Pad Mount
.125 Aluminum Alloy
47" Tall x 24" Wide x 20" Deep

One Piece Sloped Hood with Fan Mounting Bracket
Duel Door with Corbin Lock Mounting Plate
with Latch Rod at the Bottom
3 Point Padlocking L-Handle
Stamped Louvers, 4 Rows in Both Doors
Four Eliminated Under Door Handle

Lifting Eyes on Front and Back
Continuous Hinge on Doors



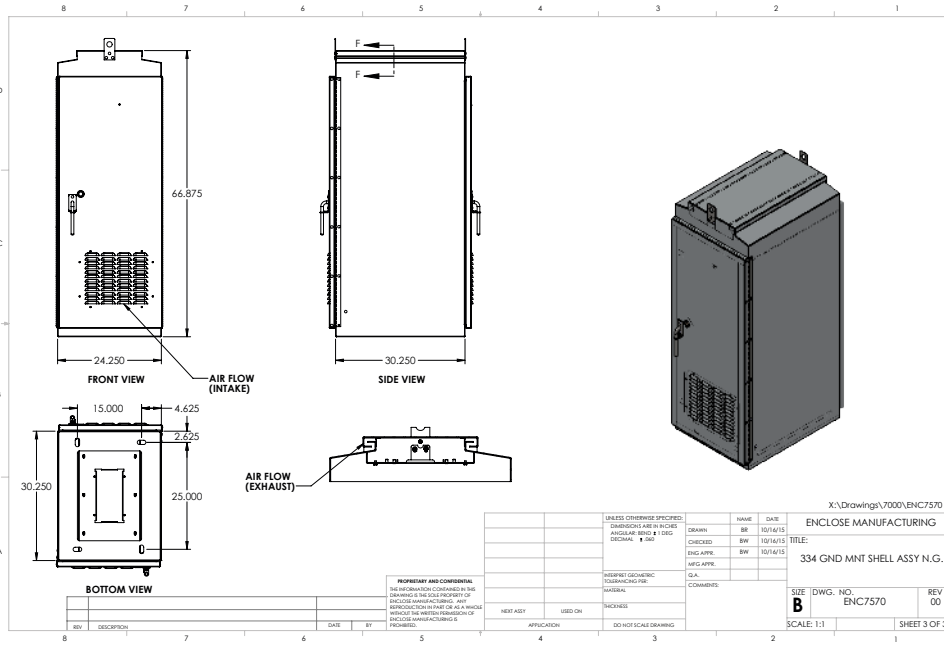
336S Stretch Pad Mount

We customize to fit your needs

336S Pole Mount

We customize to fit your needs





OPTIONS AVAILABLE

Door Options

- Part No. ENC7573
Corbin Lock #2 Door
- Part No. ENC7653
Best Lock Door

Paint Options

- ANSI-61 Gray
- Anti-Graffiti Gray
- Polyester White
- Flat Black
- Contact us for additional options

334 PAD MOUNT T.C.

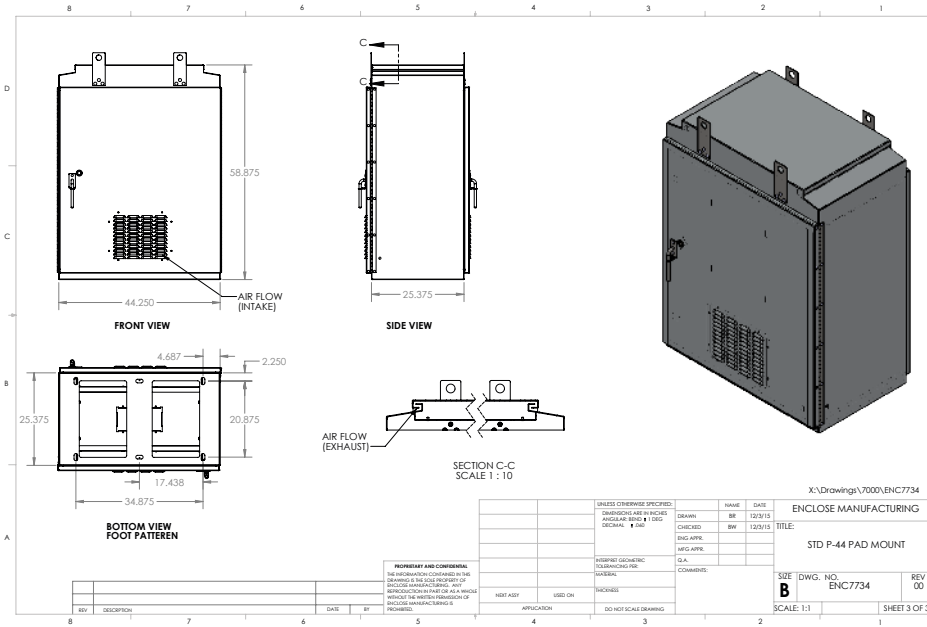
MODEL: 334 Pad Mount T.C.
PART NUMBER: ENC-2001
Traffic Enclosure Pad Mount
.125 Aluminum Alloy
66" Tall x 24" Wide x 30" Deep

Sloped Hood with Fan Mounting Bracket
Duel Door with Corbin Lock Mounting Plate
3-Point Padlocking L-Handle
4 Rows of Stamped Louvers in Both Doors
14 GA Galvn Sub-Panel 27.675 x 34.125

Lifting Eyes on Front and Back
Continuous Hinge on Doors



334 Pad Mount T.C.
We customize to fit your needs



OPTIONS AVAILABLE

Door Options

- Part No. ENC7735
Corbin Lock #2 Door

Paint Options

- ANSI-61 Gray
- Anti-Graffiti Gray
- Polyester White
- Flat Black
- Contact us for additional options

P44 PAD MOUNT T.C.

MODEL: P44 Pad Mount T.C.
PART NUMBER: ENC-4002
Traffic Cabinet Pad Mount
.125 Aluminum Alloy
58" Tall x 44" Wide x 26" Deep

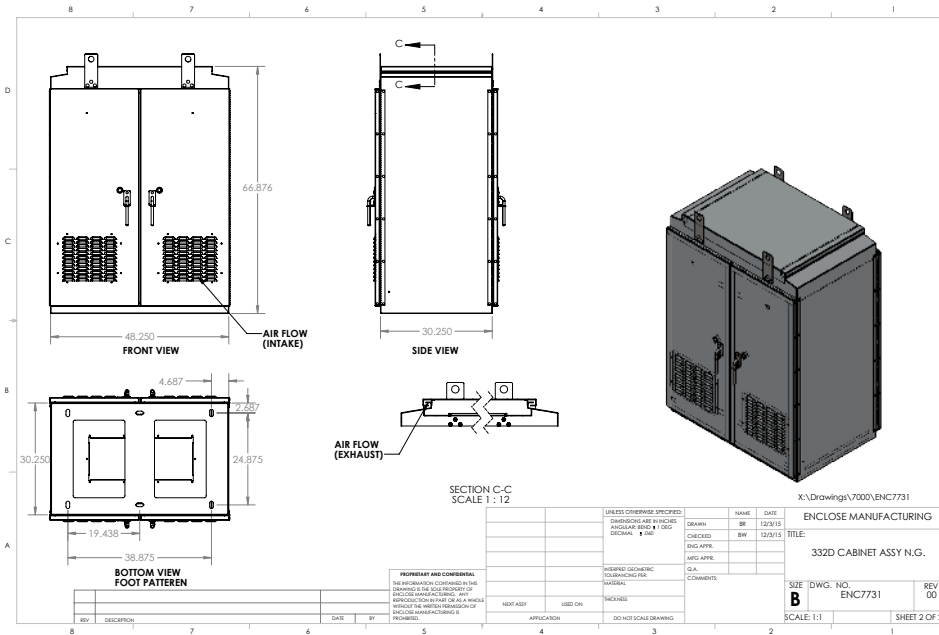
Vented Hood with Fan Mounting Bracket
Double Door with Corbin Lock Mounting Plate
3-Point Padlocking L-Handle
Stamped Louvers

12" x 16" x 1" Filter Rack with Bug Screen
Double Lifting Eyes on Front and Back
Continuous Heavy Duty Hinge on Doors



P44 Pad Mount T.C.

We customize to fit your needs



OPTIONS AVAILABLE

Door Options

- Part No. ENC7733 Right Hand Corbin Lock #2 Door
- Part No. ENC7732 Left Hand Corbin Lock #2 Door
- Part No. ENC7737 Right Hand Best Lock
- Part No. ENC7736 Left Hand Best Lock

Paint Options

- ANSI-61 Gray
- Anti-Graffiti Gray
- Polyester White
- Flat Black
- Contact us for additional options

332D PAD MOUNT T.C.

MODEL: 332D Pad Mount T.C.
 PART NUMBER: ENC3002
 Traffic Cabinet Pad Mount
 .125 Aluminum Alloy
 66" Tall x 48" Wide x 30" Deep

Sloped Hood with Fan Mounting Bracket
 Four Doors with Best Lock Mount Plates
 & Latch Rods at the Bottom
 3-Point Padlocking Handle
 Stamped Louvers 4 Rows in All Doors

12" x 16" x 1" Filter Rack and Bug Screen
 4 Lifting Eyes - Two in Front, Two in Back
 Continuous Hinge on All Four Doors



332D Pad Mount T.C.

We customize to fit your needs

OPTIONS AVAILABLE

Door Options

- Part No. ENC7735
- Corbin Lock #2 Door

Paint Options

- ANSI-61 Gray
- Anti-Graffiti Gray

- Polyester White
- Flat Black
- Contact us for additional options



MODEL: P44 Pad Mount with Heat Shrouds

PART NUMBER: ENC4001

Traffic Cabinet Pad Mount

.125 Aluminum Alloy

59" Tall x 44" Wide x 26" Deep

Vented Hood with Fan Mounting Bracket

Double Door with Corbin Lock Mounting Plate

3-Point Padlocking L-Handle

Stamped Louvers

12" x 16" x 1" Filter Rack and Bug Screen

Double Lifting Eyes on Front and Back

Continuous Heavy Duty Hinge Doors

Heat Shrouds .125" Thick 5052-H32 finish aluminum

1.5" air gap between the exterior cabinet walls and the heat shrouds

Heat Shrouds are mounted on traffic cabinet sides, top and both doors

P44 PAD MOUNT WITH HEAT SHROUDS

ABOUT US

Quality Policy

Enclose Mfg. has a full line of U.L. listed and NEMA rated electrical enclosures and traffic cabinets. Proven Top Quality commitment policies and dedication to integrity, remains a guiding principle @ Enclose Manufacturing, Inc. Throughout the years; the people of Enclose Manufacturing, Inc. have worked to develop enduring relationships with direct customers, vendors and state DOT agencies. Working directly with engineering firms, electrical services contractors and vendor partners. Customer Satisfaction and Continuous Improvement has been one of the company's greatest asset. As Enclose Manufacturing, Inc. begins its 21st year in business, the staff and management look forward to working alongside you as we meet the needs and challenges of the future. Nearly every cabinet we build at our facility undergoes a water test to assure that our customers are getting the proper cabinet rating required, whether it be a Type 1 or 4X cabinet we assure you that your cabinet meets all spec. requirements.

Commitment to the Future needs and Industry Standards Enclose Manufacturing Inc. is tooled up and ready to supply top quality by continuously improving our products and processes with a standard of excellence through the most efficient means possible.

State of The Art High Tech Production Process

Enclose Mfg. Utilizes its 9,500 sq/ft. Production space as a state of the art production process to produce the most reliable and economical products available in today's industries. Our newly installed 5K, TruLaser 3040 Triumph laser is a testament to our commitment to top quality. We use state of the art technologies throughout our production processes. Our forming department use CNC controlled Press Brakes our Engineering staff uses Solid Works CAD program this helps in achieving same parts in a repeat atmosphere. Assuring consistency, reliability and uniformity. Our Solid Works Cad system delivers and achieves the most accurate models and designs and our engineering department readily share these cad files with our customers for their submittal packages. We also use State of The Art AWS welding equipment for achieving only the finest welds known to this industry.



GIVING YOU THE CUTTING EDGE TO PERFECTION.

TRAFFIC CABINET CATALOG

1100 HOT ROD ROAD | P.O. BOX 1151 | MITCHELL, SD 57301 | (605).990.2555

ENCLOSE[™]
MANUFACTURING INC.

 PROUDLY MADE IN USA

