



**ENCLOSE**<sup>™</sup>  
MANUFACTURING INC.

GIVING YOU THE CUTTING EDGE TO PERFECTION.

# INDUSTRIAL CABINET CATALOG

1100 HOT ROD ROAD | P.O. BOX 1151 | MITCHELL, SD 57301 | (605).990.2555

 PROUDLY MADE IN USA

# ENCLOSE™ MANUFACTURING INC.

## *Fabrication*



*State of the art machinery.*

## INTRODUCTION

### Company Founding

Enclose Manufacturing Inc. was founded in 1998 by Bill Wegleitner. Owner and proprietor and longtime resident of the great state of South Dakota. Bill has a mechanical drafting/engineering background and has spent his entire working time in the steel manufacturing area. Bill has built a successful small OEM business providing Industrial Electrical Cabinets serving the Midwest and nationally for over 20 years demonstrating pride in the family business, and genuine caring for the personal well-being of his employees.

Our goal is to produce the most reliable and efficient products available for today's ever changing demands in our industry. Enclose Manufacturing meets and exceeds the needs of the transportation and communication industries, and other environmental specialty custom applications.



**Our newly installed 5K, TruLaser 3040  
Trump laser is a testament to our  
commitment to top quality.**

**ENCLOSE**<sup>™</sup>  
MANUFACTURING INC.

1100 HOT ROD ROAD | P.O. BOX 1151 | MITCHELL, SD 57301

 **PROUDLY MADE IN USA**

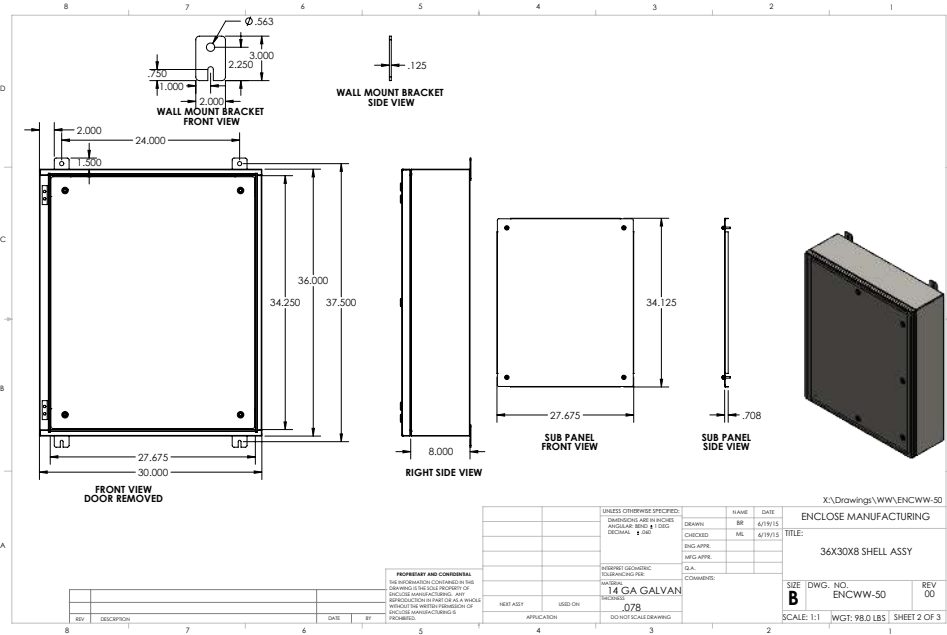
PHONE 605.990.2555      FAX 605.990.2556

SALES/QUOTES: [sales@enclosemfg.com](mailto:sales@enclosemfg.com)

HR./ BILLING INFO: [t.callahan@enclosemfg.com](mailto:t.callahan@enclosemfg.com)

ENGINEERING: [b.reinert@enclosemfg.com](mailto:b.reinert@enclosemfg.com)

[b.wegleitner@enclosemfg.com](mailto:b.wegleitner@enclosemfg.com)



**OPTIONS AVAILABLE**

- Sub Panel Options**
  - Carbon Steel/Powder Coat Finish
  - Aluminum
  - Stainless Steel
- Enclosure Material Options**
  - Carbon Steel/Powder Coat Finish (CS)
  - Aluminum (AL)
  - Stainless Steel (S.S)
- Powder Coat Paint Options**
  - ANSI-61 Gray
  - Anti-Graffiti Gray
  - White
  - Black
  - Custom Colors Upon Request

UNLESS OTHERWISE SPECIFIED				NAME	DATE
ENCLOSURE ASSY IN PAGES	DESIGN	BR	6/19/15	ENCLOSE MANUFACTURING	
ANGULAR BEND @ 90°	CHECKED	ML	6/19/15	TITLE	
ENCLOSURE	ENC. APPR.	G.A.		36X30X8 SHELL ASSY	
ENCLOSURE	ENC. APPR.	G.A.		SIZE DWG. NO. ENCWW-50 REV 00	
ENCLOSURE	ENC. APPR.	G.A.		SCALE 1:1 WGT: 98.0 LBS. SHEET 2 OF 3	
ENCLOSURE	ENC. APPR.	G.A.		14 GA GALVAN	
ENCLOSURE	ENC. APPR.	G.A.		.078	
ENCLOSURE	ENC. APPR.	G.A.		DO NOT SCALE DRAWING	

**ENCWW50**

MODEL: ENC-363008-XX-IE  
 UL 50 Listed Type 4X  
 Industrial Enclosure Wall Mount  
 14 GA. Galvaneal Paint Grip  
 36" High X 30" Wide 08" Deep

Single Door w/ Concept Hindge and 1/4 Turn Latches  
 Dual Door Flange  
 14 GA Galvn Sub-Panel 27.675 x 34.125

Powder Coated White Interior  
 ANSI-61 Gray Interior



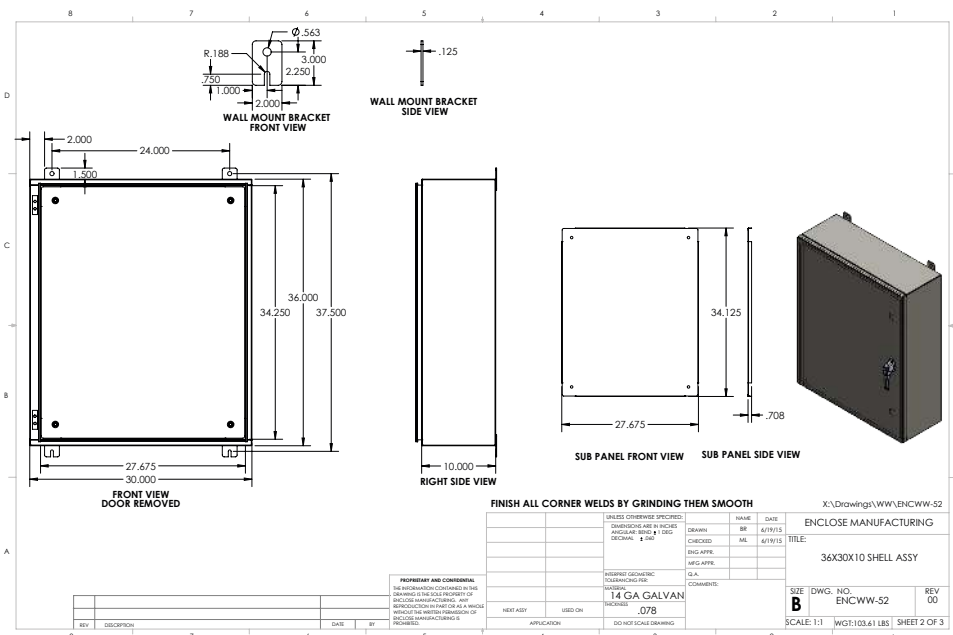
ENC-363008-IE

We customize to fit your needs  
 Available in double side-by-side doors.

MODEL	PART NUMBER SERIES	STANDARD SUB PANEL OPTIONS	ENCLOSURE MATERIAL	U.L. TYPE
ENC-3630XX-XX-XX	ENC-6000 Aluminum ENC-7000 Stainless Steel ENC-11000 Carbon Steel	CS/Paint	AL S.S CS XX	12, 3R, 4X
ENC-3630XX-XX-XX	ENC-6000 Aluminum ENC-7000 Stainless Steel ENC-11000 Carbon Steel	CS/Paint	AL S.S CS XX	12, 3R, 4X
ENC-3030XX-XX-XX	ENC-6000 Aluminum ENC-7000 Stainless Steel ENC-11000 Carbon Steel	CS/Paint	AL S.S CS XX	12, 3R, 4X
ENC-4836XX-XX-XX	ENC-6000 Aluminum ENC-7000 Stainless Steel ENC-11000 Carbon Steel	CS/Paint	AL S.S CS XX	12, 3R, 4X



1100 HOT ROD ROAD | P.O. BOX 1151 | MITCHELL, SD 57301



## OPTIONS AVAILABLE

- Sub Panel Options**
  - Carbon Steel/Powder Coat Finish
  - Aluminum
  - Stainless Steel
- Enclosure Material Options**
  - Carbon Steel/Powder Coat Finish (CS)
  - Aluminum (AL)
  - Stainless Steel (S.S)
- Powder Coat Paint Options**
  - ANSI-61 Gray
  - Anti-Graffiti Gray
  - White
  - Black
  - Custom Colors Upon Request

# ENCWW52

MODEL: ENC-363010-XX-IE  
 UL 50 Listed Type 4X  
 Industrial Enclosure Wall Mount  
 14 GA. Galvaneal Paint Grip  
 36" High X 30" Wide 10" Deep

Single Door w/ Concept Hinge  
 (1) 3 Point Padlocking w/Black L-Handle  
 w/Roller Rods  
 Duel Door Flange  
 14 GA Galvn Sub-Panel 27.675 x 34.125

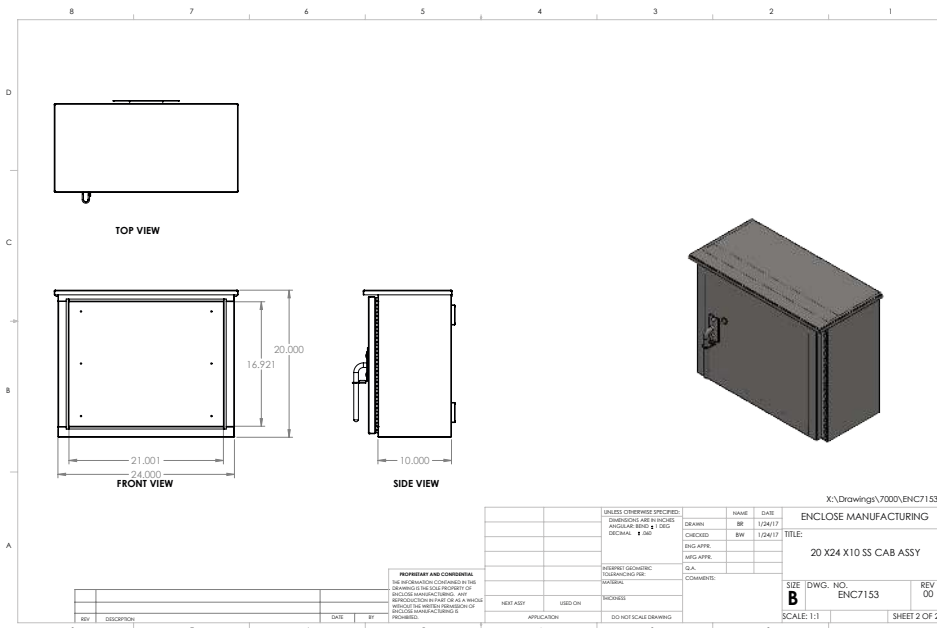
Powder Coated White Interior  
 ANSI-61 Gray Interior



MODEL	PART NUMBER SERIES	STANDARD SUB PANEL OPTIONS	ENCLOSURE MATERIAL	U.L. TYPE
ENC-3630XX-XX-XX	ENC-6000 Aluminum ENC-7000 Stainless Steel ENC-11000 Carbon Steel	CS/Paint	AL S.S CS XX	12, 3R, 4X
ENC-3630XX-XX-XX	ENC-6000 Aluminum ENC-7000 Stainless Steel ENC-11000 Carbon Steel	CS/Paint	AL S.S CS XX	12, 3R, 4X
ENC-3030XX-XX-XX	ENC-6000 Aluminum ENC-7000 Stainless Steel ENC-11000 Carbon Steel	CS/Paint	AL S.S CS XX	12, 3R, 4X
ENC-4836XX-XX-XX	ENC-6000 Aluminum ENC-7000 Stainless Steel ENC-11000 Carbon Steel	CS/Paint	AL S.S CS XX	12, 3R, 4X



We customize to fit your needs  
 Available in double side-by-side doors.



## OPTIONS AVAILABLE

### Sub Panel Options

- Carbon Steel/Powder Coat Finish
- Aluminum
- Stainless Steel

### Enclosure Material Options

- Carbon Steel/Powder Coat Finish (CS)
- Aluminum (AL)
- Stainless Steel (S.S)

### Powder Coat Paint Options

- ANSI-61 Gray
- Anti-Graffiti Gray
- White
- Black
- Custom Colors Upon Request

## ENC-202410

MODEL: ENC-202410

UL 50 Type 12

3R Industrial Cabinet

14 GA. 304 #4 Finish Stainless Steel

Pole Mount

Padlocking Stainless Steel Handle

Corbin Lock Mounting Plate

1/2" x 1 1/2" Neoprene Door Gasket Sealing

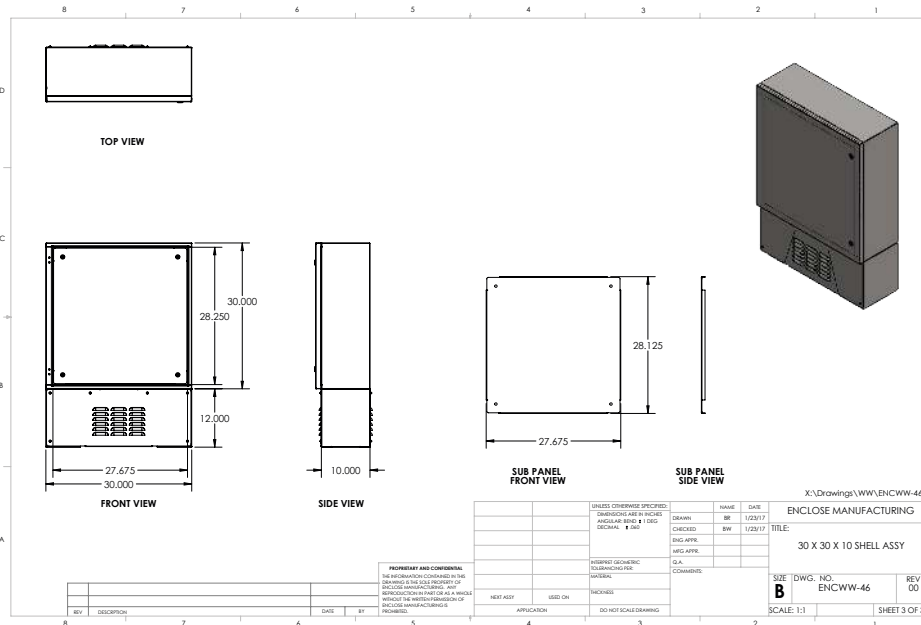
Rain Cap

Continuous Hinge

We customize to fit your needs



MODEL	PART NUMBER SERIES	STANDARD SUB PANEL OPTIONS	ENCLOSURE MATERIAL	U.L. TYPE
ENC-2020XX-XX-IE	ENC-6000 Aluminum ENC-7000 Stainless Steel ENC-11000 Carbon Steel	CS/Paint	AL S.S XX CS	12, 3R, 4X
ENC-2024XX-XX-IE	ENC-6000 Aluminum ENC-7000 Stainless Steel ENC-11000 Carbon Steel	CS/Paint	AL S.S XX CS	12, 3R, 4X
ENC-2424XX-XX-IE	ENC-6000 Aluminum ENC-7000 Stainless Steel ENC-11000 Carbon Steel	CS/Paint	AL S.S XX CS	12, 3R, 4X
ENC-2430XX-XX-IE	ENC-6000 Aluminum ENC-7000 Stainless Steel ENC-11000 Carbon Steel	CS/Paint	AL S.S XX CS	12, 3R, 4X
ENC-2436XX-XX-IE	ENC-6000 Aluminum ENC-7000 Stainless Steel ENC-11000 Carbon Steel	CS/Paint	AL S.S XX CS	12, 3R, 4X
ENC-3020XX-XX-IE	ENC-6000 Aluminum ENC-7000 Stainless Steel ENC-11000 Carbon Steel	CS/Paint	AL S.S XX CS	12, 3R, 4X
ENC-3030XX-XX-IE	ENC-6000 Aluminum ENC-7000 Stainless Steel ENC-11000 Carbon Steel	CS/Paint	AL S.S XX CS	12, 3R, 4X
ENC-3036XX-XX-IE	ENC-6000 Aluminum ENC-7000 Stainless Steel ENC-11000 Carbon Steel	CS/Paint	AL S.S XX CS	12, 3R, 4X
ENC-3636XX-XX-IE	ENC-6000 Aluminum ENC-7000 Stainless Steel ENC-11000 Carbon Steel	CS/Paint	AL S.S XX CS	12, 3R, 4X
ENC-3642XX-XX-IE	ENC-6000 Aluminum ENC-7000 Stainless Steel ENC-11000 Carbon Steel	CS/Paint	AL S.S XX CS	12, 3R, 4X



## OPTIONS AVAILABLE

- Sub Panel Options**
  - Carbon Steel/Powder Coat Finish
  - Aluminum
  - Stainless Steel
- Enclosure Material Options**
  - Carbon Steel/Powder Coat Finish (CS)
  - Aluminum (AL)
  - Stainless Steel (S.S)
- Powder Coat Paint Options**
  - ANSI-61 Gray
  - Anti-Graffiti Gray
  - White
  - Black
  - Custom Colors Upon Request

# ENC-303010

MODEL: ENC-303010-XX-IE  
 UL 50 Listed Type  
 4X Industrial Enclosure  
 .125 5052 H32 Aluminum

Single Door w/ Concept Hinged  
 1/4 Turn Latches  
 Duel Door Flange  
 Neoprene Poron Gasket Door Seal  
 12" Floor Stand Kit with Louvered  
 Front and Back Skirting

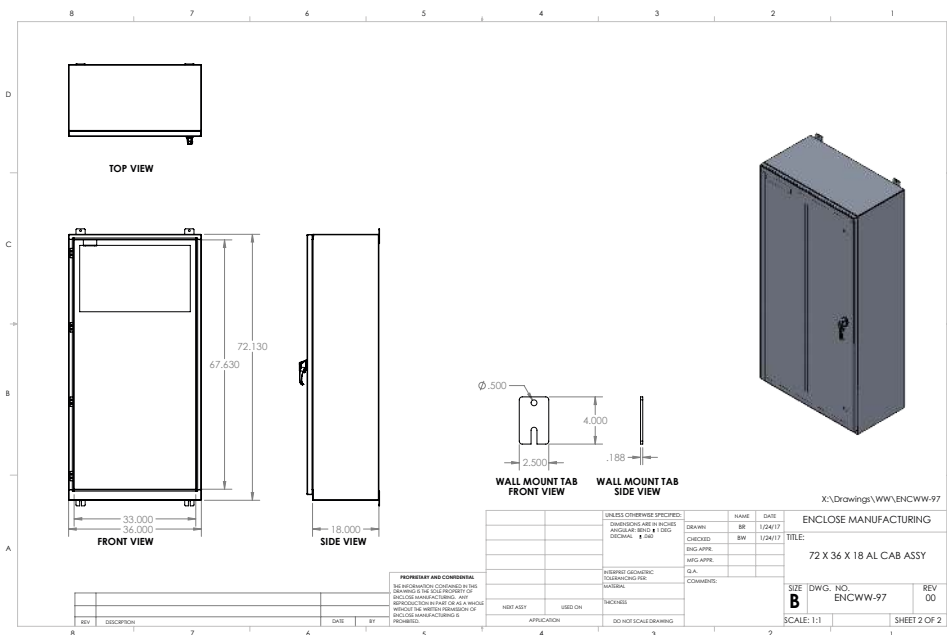
12 ga Sub Panel Powder Coated White

We customize to fit your needs



ENC-303010-AL-IE

MODEL	PART NUMBER SERIES	STANDARD SUB PANEL OPTIONS	ENCLOSURE MATERIAL	U.L. TYPE
ENC-303010-XX-IE	ENC-6000 Aluminum ENC-7000 Stainless Steel ENC-11000 Carbon Steel	CS/Paint	XX	12, 3R, 4X
ENC-303610-XX-IE	ENC-6000 Aluminum ENC-7000 Stainless Steel ENC-11000 Carbon Steel	CS/Paint	XX	12, 3R, 4X
ENC-303012-XX-IE	ENC-6000 Aluminum ENC-7000 Stainless Steel ENC-11000 Carbon Steel	CS/Paint	XX	12, 3R, 4X
ENC-303612-XX-IE	ENC-6000 Aluminum ENC-7000 Stainless Steel ENC-11000 Carbon Steel	CS/Paint	XX	12, 3R, 4X
ENC-363610-XX-IE	ENC-6000 Aluminum ENC-7000 Stainless Steel ENC-11000 Carbon Steel	CS/Paint	XX	12, 3R, 4X
ENC-363612-XX-IE	ENC-6000 Aluminum ENC-7000 Stainless Steel ENC-11000 Carbon Steel	CS/Paint	XX	12, 3R, 4X
ENC-483012-XX-IE	ENC-6000 Aluminum ENC-7000 Stainless Steel ENC-11000 Carbon Steel	CS/Paint	XX	12, 3R, 4X
ENC-483612-XX-IE	ENC-6000 Aluminum ENC-7000 Stainless Steel ENC-11000 Carbon Steel	CS/Paint	XX	12, 3R, 4X
ENC-604812-XX-IE	ENC-6000 Aluminum ENC-7000 Stainless Steel ENC-11000 Carbon Steel	CS/Paint	XX	12, 3R, 4X
ENC-606012-XX-IE	ENC-6000 Aluminum ENC-7000 Stainless Steel ENC-11000 Carbon Steel	CS/Paint	XX	12, 3R, 4X
ENC-726012-XX-IE	ENC-6000 Aluminum ENC-7000 Stainless Steel ENC-11000 Carbon Steel	CS/Paint	XX	12, 3R, 4X



## OPTIONS AVAILABLE

### Sub Panel Options

- Carbon Steel/Powder Coat Finish
- Aluminum
- Stainless Steel

### Enclosure Material Options

- Carbon Steel/Powder Coat Finish (CS)
- Aluminum (AL)
- Stainless Steel (S.S)

### Powder Coat Paint Options

- ANSI-61 Gray
- Anti-Graffiti Gray
- White
- Black
- Custom Colors Upon Request

# ENC-723618

MODEL: ENC-723618  
UL 50 Type 3R  
Industrial Enclosure  
.125 5052 H32 Aluminum  
72" High x 36" Wide x 18" Deep

Single Door Complex  
w/ 3-Point Padlocking L-Handle Assembly  
Duel Door Flange To Avoid Water Entry

1/2" x 1 1/2" Neoprene Door Gasket Sealing  
Wall Mount Or Free Standing Options  
Full Size Sub-Panel

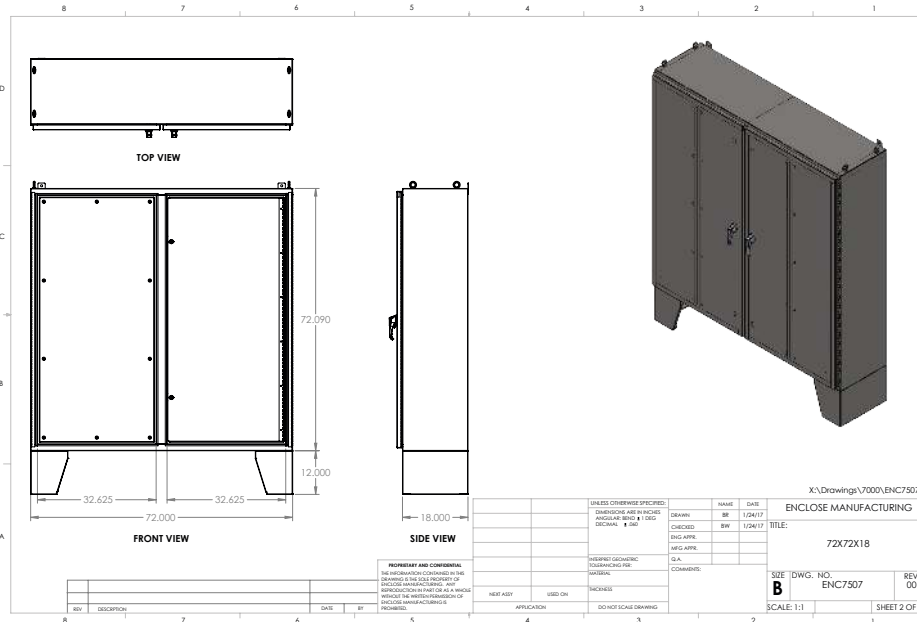
Carbon Steel  
Painted White



MODEL	PART NUMBER SERIES	STANDARD SUB PANEL OPTIONS	ENCLOSURE MATERIAL	U.L. TYPE
ENC-243610-XX-XX	ENC-6000 Aluminum ENC-7000 Stainless Steel ENC-11000 Carbon Steel	CS/Paint	AL XX S.S CS	12, 3R, 4X
ENC-303010-XX-XX	ENC-6000 Aluminum ENC-7000 Stainless Steel ENC-11000 Carbon Steel	CS/Paint	AL XX S.S CS	12, 3R, 4X
ENC-303610-XX-XX	ENC-6000 Aluminum ENC-7000 Stainless Steel ENC-11000 Carbon Steel	CS/Paint	AL XX S.S CS	12, 3R, 4X
ENC-363610-XX-XX	ENC-6000 Aluminum ENC-7000 Stainless Steel ENC-11000 Carbon Steel	CS/Paint	AL XX S.S CS	12, 3R, 4X
ENC-364210-XX-XX	ENC-6000 Aluminum ENC-7000 Stainless Steel ENC-11000 Carbon Steel	CS/Paint	AL XX S.S CS	12, 3R, 4X
ENC-484210-XX-XX	ENC-6000 Aluminum ENC-7000 Stainless Steel ENC-11000 Carbon Steel	CS/Paint	AL XX S.S CS	12, 3R, 4X
ENC-603612-XX-XX	ENC-6000 Aluminum ENC-7000 Stainless Steel ENC-11000 Carbon Steel	CS/Paint	AL XX S.S CS	12, 3R, 4X
ENC-604212-XX-XX	ENC-6000 Aluminum ENC-7000 Stainless Steel ENC-11000 Carbon Steel	CS/Paint	AL XX S.S CS	12, 3R, 4X
ENC-723612-XX-XX	ENC-6000 Aluminum ENC-7000 Stainless Steel ENC-11000 Carbon Steel	CS/Paint	AL XX S.S CS	12, 3R, 4X
ENC-724212-XX-XX	ENC-6000 Aluminum ENC-7000 Stainless Steel ENC-11000 Carbon Steel	CS/Paint	AL XX S.S CS	12, 3R, 4X

We customize to fit your needs





## OPTIONS AVAILABLE

### Sub Panel Options

- Carbon Steel/Powder Coat Finish
- Aluminum
- Stainless Steel

### Enclosure Material Options

- Carbon Steel/Powder Coat Finish (CS)
- Aluminum (AL)
- Stainless Steel (S.S)

### Powder Coat Paint Options

- ANSI-61 Gray
- Anti-Graffiti Gray
- White
- Black
- Custom Colors Upon Request

## ENC-727218

MODEL: ENC-727218

Part #: ENC7507

Nema Type 4X Electrical Enclosure

12/14 Ga. 304 #4 Stainless Steel

72" High x 72" Wide x 18" Deep

Double Door Complex

w/ 3-Point Padlocking L-Handle Assembly

1" x 1 1/2" Neoprene Door Gasket Sealing

Dual Door Flange To Avoid Water Entry

12" Floor Stands

Four Heavy Duty Lifting Eyes

Two .125 5052 H-32 Aluminum Sub-Panel

Painted White

Right Hand Deadfront Inner Door Assembly

Carbon Steel Painted White

w/ Two 1/4 Turn Latches

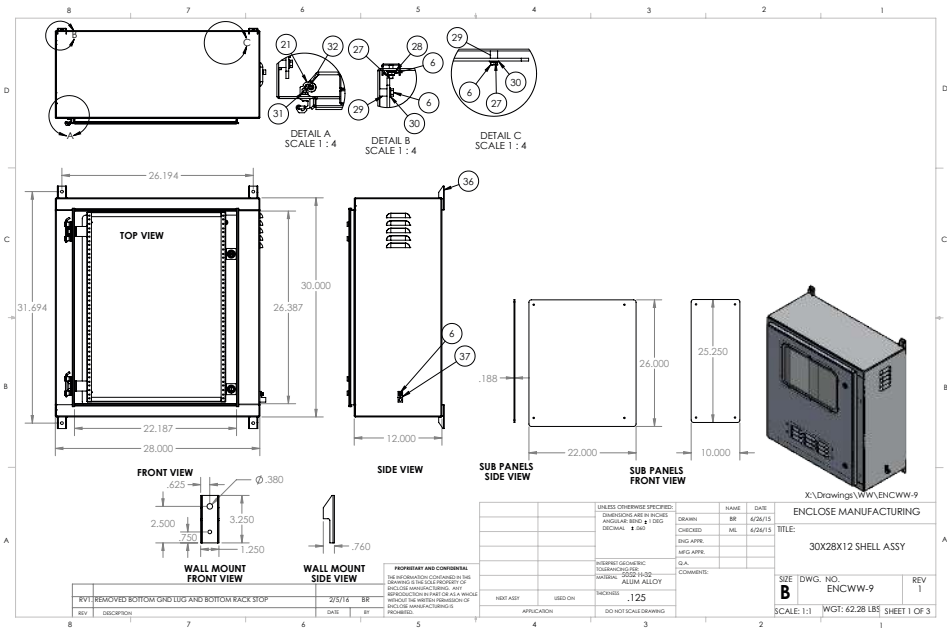
Rigid Center Post



We customize to fit your needs

MODEL	PART NUMBER SERIES	STANDARD SUB PANEL OPTIONS	ENCLOSURE MATERIAL	U.L. TYPE
ENC-48484XX-XX-XX	ENC-6000 Aluminum ENC-7000 Stainless Steel ENC-11000 Carbon Steel	CS/Paint	XX	12, 3R, 4X
ENC-4860XX-XX-XX	ENC-6000 Aluminum ENC-7000 Stainless Steel ENC-11000 Carbon Steel	CS/Paint	XX	12, 3R, 4X
ENC-6048XX-XX-XX	ENC-6000 Aluminum ENC-7000 Stainless Steel ENC-11000 Carbon Steel	CS/Paint	XX	12, 3R, 4X
ENC-6060XX-XX-XX	ENC-6000 Aluminum ENC-7000 Stainless Steel ENC-11000 Carbon Steel	CS/Paint	XX	12, 3R, 4X
ENC-7260XX-XX-XX	ENC-6000 Aluminum ENC-7000 Stainless Steel ENC-11000 Carbon Steel	CS/Paint	XX	12, 3R, 4X
ENC-7272XX-XX-XX	ENC-6000 Aluminum ENC-7000 Stainless Steel ENC-11000 Carbon Steel	CS/Paint	XX	12, 3R, 4X

ENC-7272-18-SS-4X



## OPTIONS AVAILABLE

- Sub Panel Options**
  - Carbon Steel/Powder Coat Finish
  - Aluminum
  - Stainless Steel
- Enclosure Material Options**
  - Carbon Steel/Powder Coat Finish (CS)
  - Aluminum (AL)
  - Stainless Steel (S.S)
- Powder Coat Paint Options**
  - ANSI-61 Gray
  - Anti-Graffiti Gray
  - White
  - Black
  - Custom Colors Upon Request

# ENC-283012 | ENC7441

MODEL: ENC-283012 AL-IE  
 Nema Type, Industrial Enclosure  
 Wall Mount Style - Multi-Position Tabs  
 .125 5052 H32 Aluminum  
 Single Door Concept Hinge and 1/4 Turn Latches  
 Dual Door Flange  
 1/2" x 1 1/2" Neoprene Door Gasket Sealing  
 10 x 16 Window w/ Louvers  
 .188 Aluminum  
 Sub Panels Rear and Left Side  
 Swing Out Rack w/ 19" 2 External Grounding Lugs

MODEL: ENC7441  
 51 x 78 x 42 SS  
 UL Type 3R Environmental Industrial Enclosure  
 Pad Mount  
 12/14 Ga. SS 304 2B  
 51" Tall x 72" Wide x 42" Deep  
 (3) Vented Doors w/ Corbin Lock Mounting Plate  
 3-Point Padlocking L-Handle  
 3 Rows of Stamped Louvers  
 12" x 12" x 1" Filter Rack w/ Bug Screen  
 Lifting Eyes On Each Side  
 Heavy Duty Continuous Hinge on Doors  
 Powder Coated Designer Beige Color PLSF 40214



We customize to fit your needs



1100 HOT ROD ROAD | P.O. BOX 1151 | MITCHELL, SD 57301

## WHY ENCLOSE MANUFACTURING

### Quality Policy

Enclose Mfg. has a full line of U.L. listed and NEMA rated electrical enclosures and traffic cabinets. Proven Top Quality commitment policies and dedication to integrity, remains a guiding principle @ Enclose Manufacturing, Inc. Throughout the years; the people of Enclose Manufacturing, Inc. have worked to develop enduring relationships with direct customers, vendors and state DOT agencies. Working directly with engineering firms, electrical services contractors and vendor partners. Customer Satisfaction and Continuous Improvement has been one of the company's greatest asset. As Enclose Manufacturing, Inc. begins its 21st year in business, the staff and management look forward to working alongside you as we meet the needs and challenges of the future. Nearly every cabinet we build at our facility undergoes a water test to assure that our customers are getting the proper cabinet rating required, whether it be a Type 1 or 4X cabinet we assure you that your cabinet meets all spec. requirements.

Commitment to the Future needs and Industry Standards Enclose Manufacturing Inc. is tooled up and ready to supply top quality by continuously improving our products and processes with a standard of excellence through the most efficient means possible.

### State of The Art High Tech Production Process

Enclose Mfg. Utilizes its 9,500 sq/ft. Production space as a state of the art production process to produce the most reliable and economical products available in today's industries. Our newly installed 5K, TruLaser 3040 Trumpf laser is a testament to our commitment to top quality. We use state of the art technologies throughout our production processes. Our forming department use CNC controlled Press Brakes our Engineering staff uses Solid Works CAD program this helps in achieving same parts in a repeat atmosphere. Assuring consistency, reliability and uniformity. Our Solid Works Cad system delivers and achieves the most accurate models and designs and our engineering department readily share these cad files with our customers for their submittal packages. We also use State of The Art AWS welding equipment for achieving only the finest welds known to this industry.

GIVING YOU THE CUTTING EDGE TO PERFECTION.

# INDUSTRIAL CABINET CATALOG

1100 HOT ROD ROAD | P.O. BOX 1151 | MITCHELL, SD 57301 | (605).990.2555

**ENCLOSE**<sup>™</sup>  
MANUFACTURING INC.

 PROUDLY MADE IN USA

